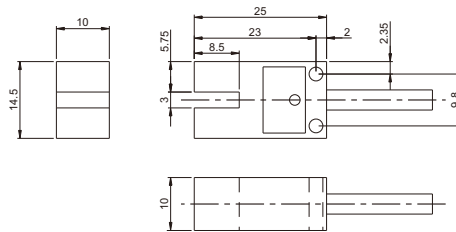


TL-D Series

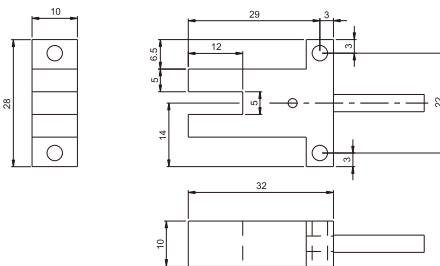
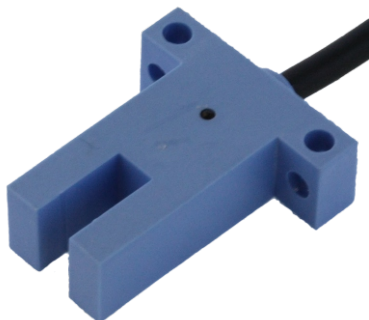
- ⌚ No-touch operation, high response frequency, wide range application.
- ⌚ Reverse polarity and short circuit protection.
- ⌚ Variable with cable or connector version, customer-specific versions available.
- ⌚ Good environmental resistance up to IP67, all products are CE approved.



IEC IP67

Pre-wired 2M Cable / ABS

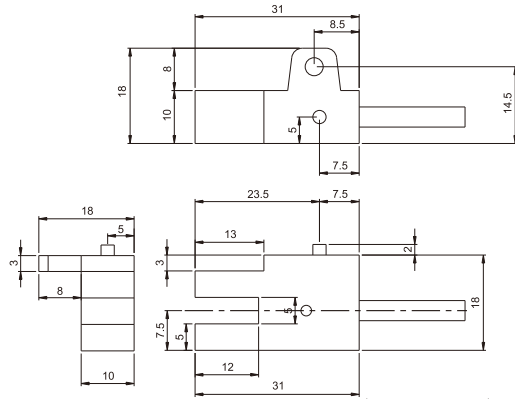
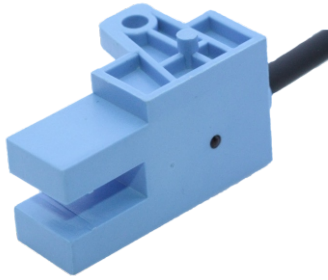
Switching Output	Model Number	Operating Voltage	Response Frequency	Sensing Distance
DC 3-Wire NPN NO	TL-D3NE1	12~24VDC±10%	1200Hz	3mm
DC 3-Wire NPN NC	TL-D3NE2			



IEC IP67

Pre-wired 2M Cable / ABS

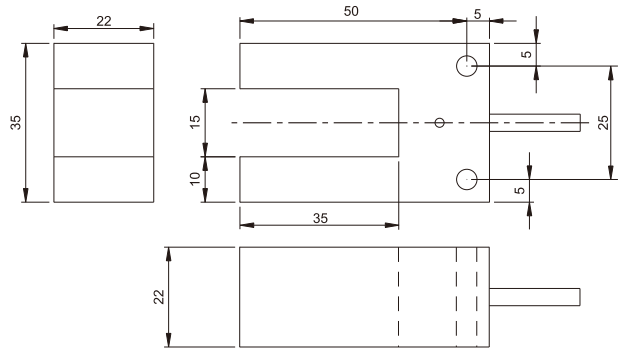
Switching Output	Model Number	Operating Voltage	Response Frequency	Sensing Distance
DC 3-Wire NPN NO	TL-D5NE1-T	12~24VDC±10%	750Hz	5mm



IEC IP67

Pre-wired 2M Cable / ABS

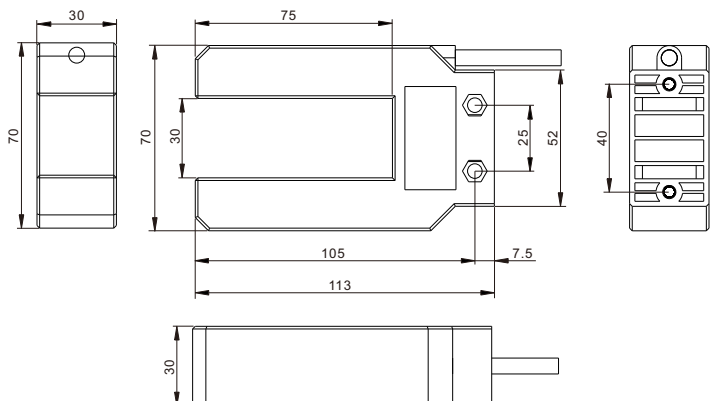
Switching Output	Model Number	Operating Voltage	Response Frequency	Sensing Distance
DC 3-Wire NPN NO	TL-D5LNE1-T	12~24VDC±10%	750Hz	5mm



IEC IP67

Pre-wired 2M Cable / ABS

Switching Output	Model Number	Operating Voltage	Response Frequency	Sensing Distance
DC 3-Wire NPN NO	TL-D15NE1-T	12~24VDC±10%	200Hz	15mm



IEC IP67

Pre-wired 2M Cable / ABS

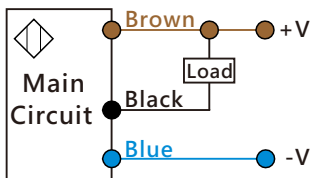
Switching Output	Model Number	Operating Voltage	Response Frequency	Sensing Distance
AC 2-Wire SCR NO	TL-D30AR1	24~240VAC±10%	25Hz	30mm

Item	Specifications
Standard sensing object	Iron, 10×10×1 mm (TL-D3 Mode) Iron, 14×14×1 mm (TL-D5 Mode) Iron, 30×30×1 mm (TL-D15 Mode) Iron, 40×40×1 mm (TL-D30 Mode)
Installation	Unshielded (TL-D5 · TL-D15 · TL-D30 Mode) Shielded (TL-D3 Mode)
Load current	DC 3 Wire ≤ 100mA · AC 2 Wire ≤ 300mA TL-D15 Mode ≤ 200mA
Operation indicator	Red LED
Circuits protection	Reversed polarity & Short circuit protection
Ambient temperature & humidity range	Operating : -20 ~ 70°C / RH 35 ~ 85% (with no icing or condensation)

Wiring Diagram

DC-3wire

NPN NO/NC Type



AC-2wire

NO Type

