

KP-ES03 Series

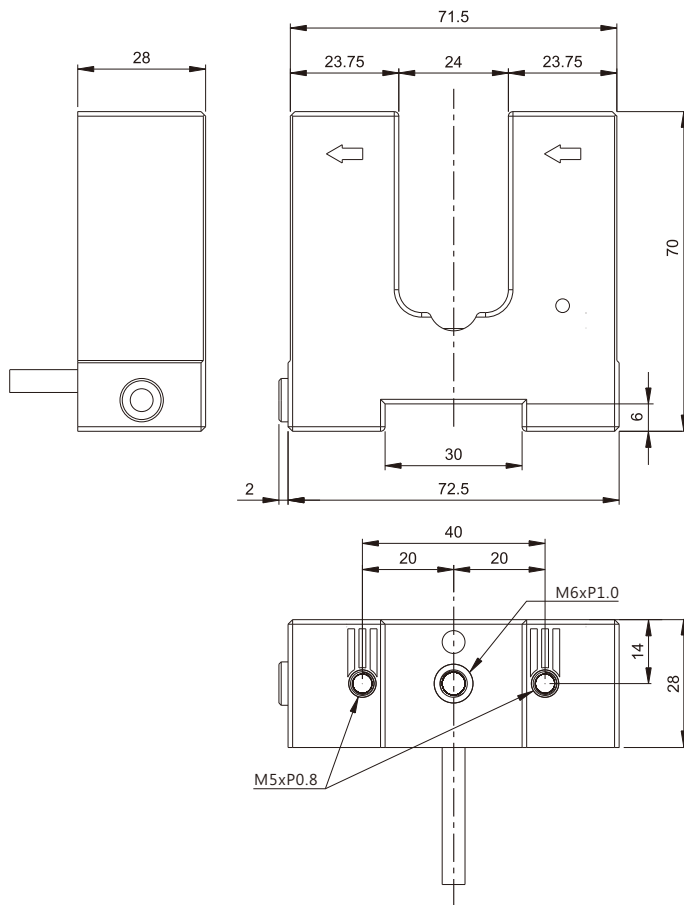
- ⊗ For elevator, escalator, conveyor equipment position detection.
- ⊗ Operating voltage at 24VAC/DC, relay and transistor switching output.
- ⊗ With Light ON and Dark ON two functions.
- ⊗ Good environmental resistance up to IP67.



<u>Item</u>	<u>Specifications</u>	
Model number	KP-ES03A-3B	KP-ES03N-3B
Sensing distance	24mm	
Switching output	Relay Output 1C.	NPN NO & NC
Standard sensing object	Opaque Ø8mm	
Operating voltage	24VAC/DC±10%	DC 12~24V±10%
Response time	<40ms	<5ms
Load current	<1A	<200mA
Light source	Infrared LED	
Operation indicator	Red LED	
Circuits protection	Reversed polarity protection	
Enclosure protection	IEC IP67	
Ambient temperature & humidity range	Operating : -20 ~ 55°C / RH 35 ~85% (with no icing or condensation)	
Ambient illumination	Lamplight<3000 Lux / Sunlight<10000 Lux	

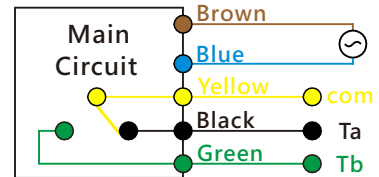
Housing material	Case : PBT / Lens : Acrylic
Connecting method	Pre-wired 2M Cable
Accessories	Screws

Dimension



Wiring Diagram

Relay output Type



NPN NO&NC Type

